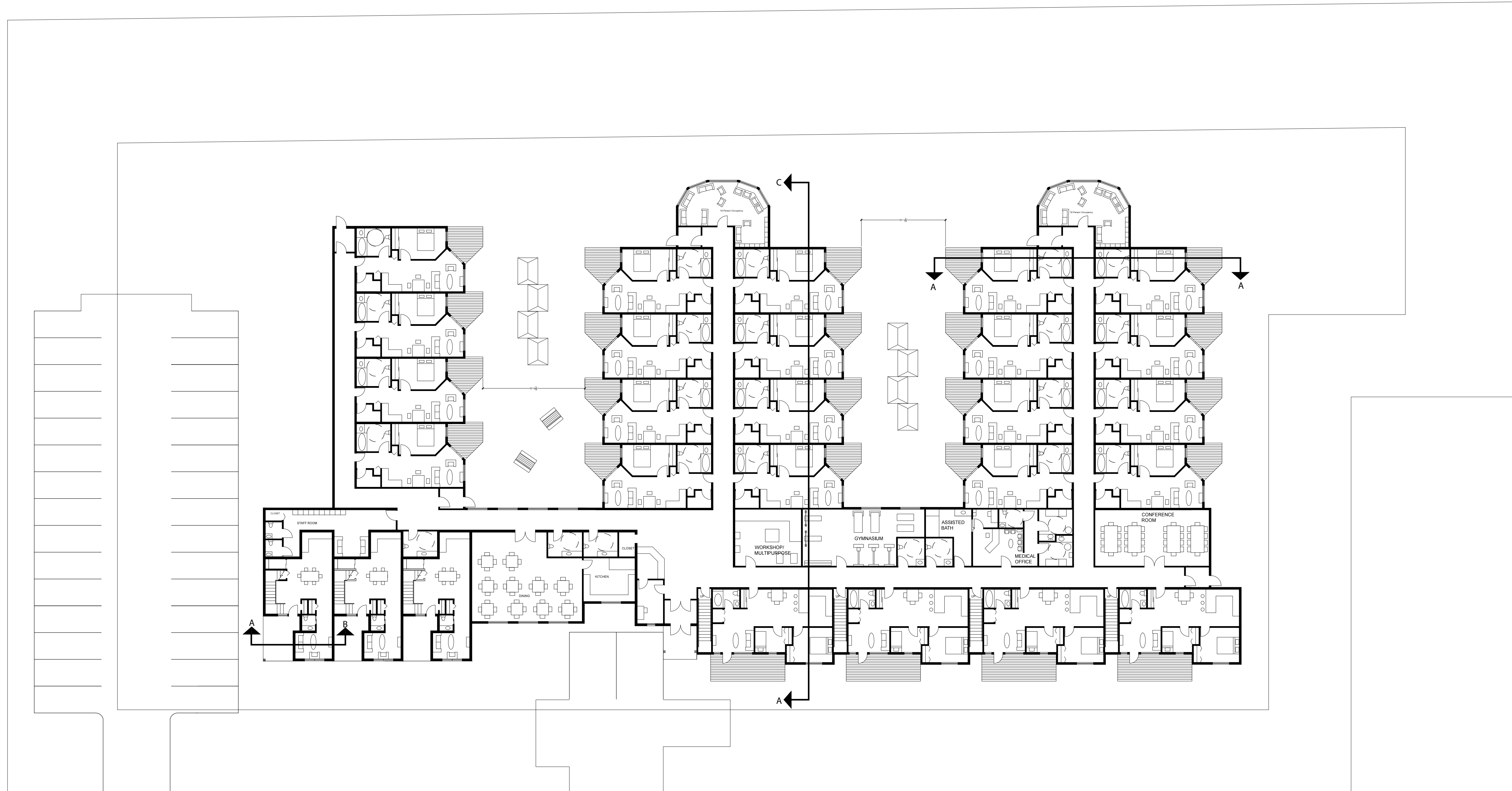


HOUSING FACILITY EXAMPLE MAIN FLOOR PLAN



MCEWEN SCHOOL OF ARCHITECTURE
SUDBURY, ON

PROJECT: CHAPLEAU AGAIN IN PLACE FACILITY
ADDRESS: 20 PINE STREET, CHAPLEAU, ON

DRAWING: A1: FIRST FLOOR PLAN
SCALE: 1:200

DRAWN BY: TAYLOR C. KREPS
DATE: DECEMBER 6 2016